

Ceiling hanging bracket

(Vertical hanging / Inclined hanging)

TY-CE103PS10

Product summary

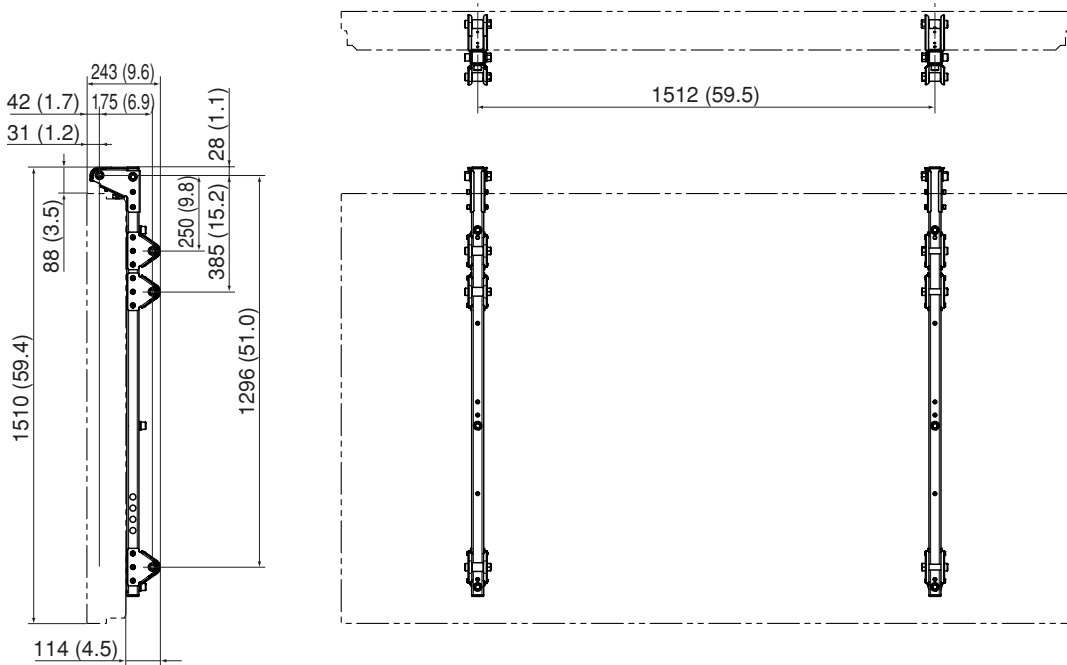
This equipment is a ceiling unit for suspending the Plasma Display from a ceiling structure.
 This ceiling unit is angle-adjustable in five steps. It is exclusive to the model 103 inch.
 When installing the ceiling unit, always support its weight with four or more wire ropes etc. and install a swing stop according to the circumstance. Besides, install two other wire ropes so as to prevent the unit from falling down.

Product specification (Design and specifications subject to change without notice)

Weight (Mass)	Vertical hanging 15kg (33.1 lbs.) Inclined hanging 37 kg (81.6 lbs.)
Adjusting angles	0, 5, 10, 15, 20 degrees

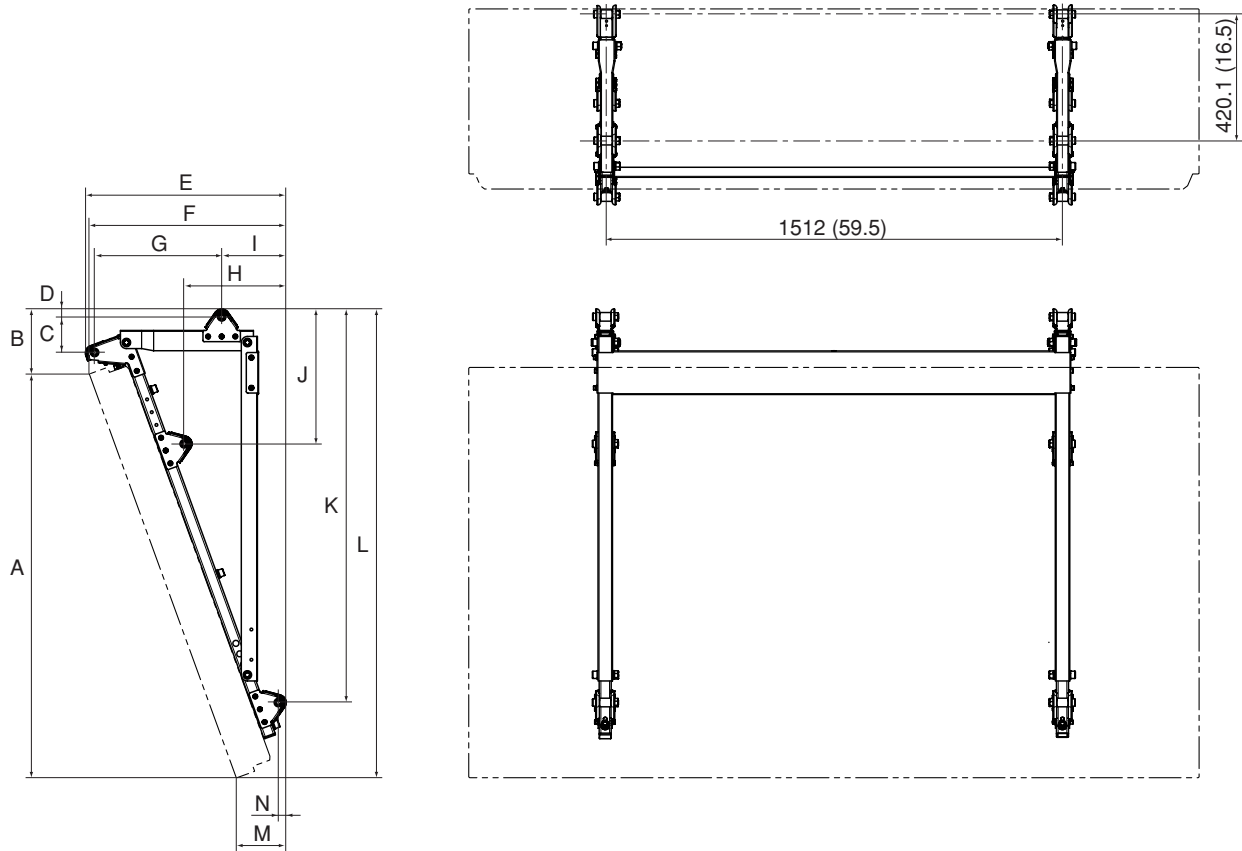
Dimensions (Vertical hanging)

Cautions : This drawing is not a scale. Unit : mm (inches)



Dimensions (Inclined hanging)

Cautions : This drawing is not a scale. Unit : mm (inches)



R	5°	10°	15°	20°
	mm (inches)	mm (inches)	mm (inches)	mm (inches)
A	1416 (55.7)	1400 (55.1)	1373 (54.1)	1336 (52.6)
B	180 (7.1)	192 (7.6)	204 (8.0)	215 (8.5)
C	90 (3.5)	100 (3.9)	109 (4.3)	118 (4.6)
D	26 (1.0)	26 (1.0)	26 (1.0)	26 (1.0)
E	584 (23.0)	576 (22.7)	573 (22.6)	665 (26.2)
F	578 (22.8)	576 (22.7)	567 (22.3)	652 (25.7)
G	425 (16.7)	425 (16.7)	423 (16.7)	421 (16.6)
H	340 (13.4)	307 (12.1)	274 (10.8)	338 (13.3)
I	123 (4.8)	122 (4.8)	120 (4.7)	214 (8.4)
J	484 (19.1)	474 (18.7)	462 (18.2)	446 (17.6)
K	1391 (54.8)	1371 (54.0)	1341 (52.8)	1302 (51.3)
L	1596 (62.8)	1592 (62.7)	1577 (62.1)	1551 (61.1)
M	461 (18.1)	330 (13.0)	200 (7.9)	166 (6.5)
N	261 (10.3)	149 (5.9)	39 (1.5)	26 (1.0)