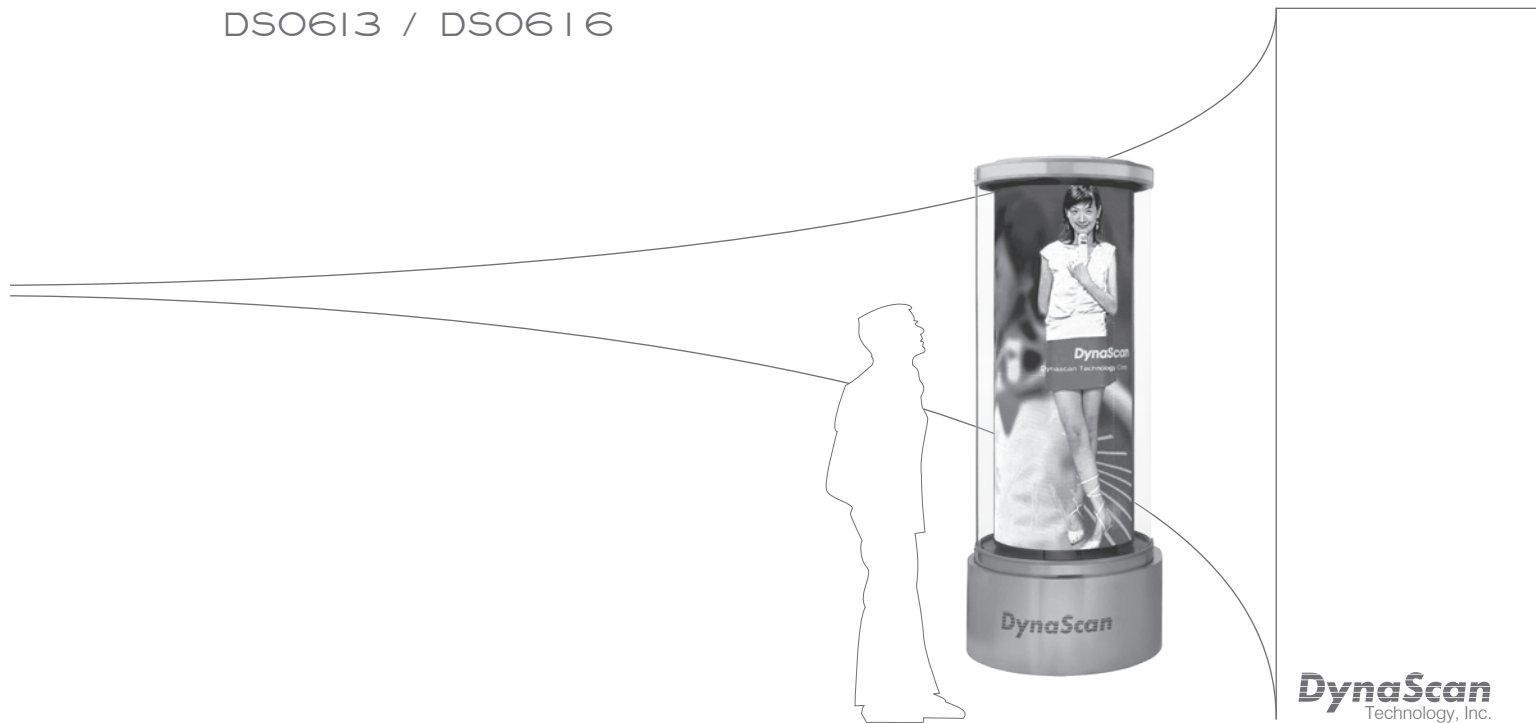


# QUICK START GUIDE

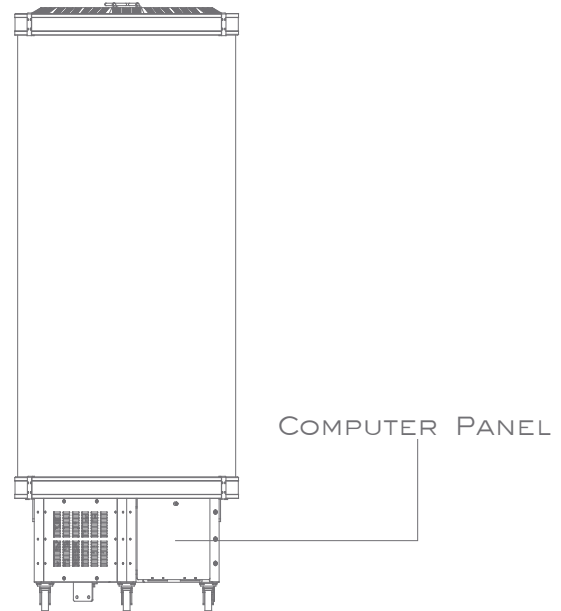
DS0613 / DS0616



**DynaScan**  
Technology, Inc.

## UNIT OVERVIEW

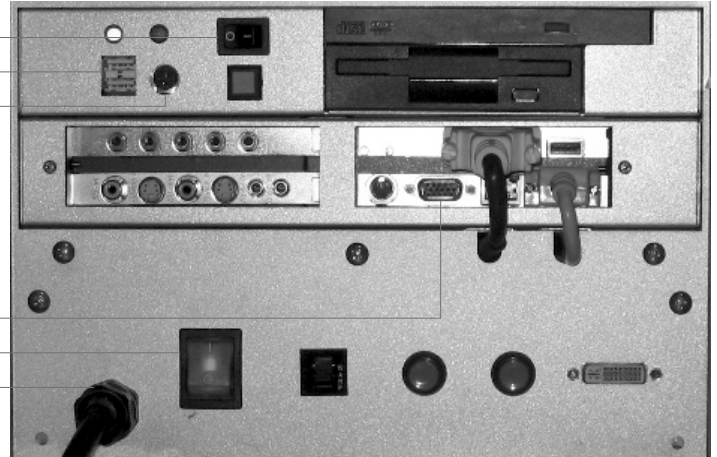
Model Number:	D50613	D50616
Physical Dimensions: [in metric]:	33" dia x 78"h 0.83m x 1.97m	33" dia x 88"h 0.83m x 2.23m
Screen Size: [in metric]:	80" w x 50" h 2.00m x 1.30m	80" w x 62" h 2.00m x 1.60m
Displays in:	1, 2 or 3 screens	1, 2 or 3 screens
Resolution: (Full Wrap)	744 x 592	960 x 720
Pixel Size:	2.7mm x 2.2mm	2.1mm x 2.2mm
Brightness:	750 nits	750 nits
Weight:	550 lb [250kg]	650 lb [300kg]
Power Requirement:	220V / 15A / 1 Phase	220V / 15A / 1 Phase



## COMPUTER PANEL

- <sup>1</sup> COMPUTER POWER SWITCH
- USB PORT (x2)
- PS2 PORT

- EXTERNAL VGA MONITOR PORT
- <sup>2</sup> MAIN POWER ON/OFF SWITCH
- POWER CORD



## GETTING POWER FOR THE UNIT

- Locate the end of the Power Cord
- There are 3 wires: Green = Ground
  - White = Phase 1
  - Black = Phase 2
- Once plug is installed, plug unit into 208/220VAC

## STARTING UP THE UNIT

- Plug mouse --> USB or PS2 port
- Plug keyboard --> USB or PS2 port
- Plug external VGA monitor --> External VGA port  
(monitor is not mandatory but will help setting up easier)
- Turn the unit on by flipping the main power switch
- DynaScan content will then start up

## TURNING OFF THE UNIT


- Press and hold the <sup>1</sup>computer power switch for 5-10 seconds
- Now turn off the <sup>2</sup>main power switch

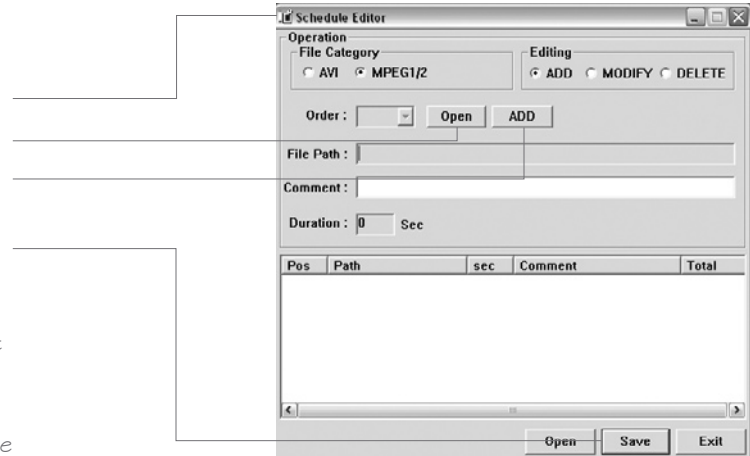
## TYPE OF VIDEO SIGNAL DYNASCAN RECOGNIZES

- D50G13 / D50G16 will recognize a video signal that is 1024 x 768 at a 60Hz refresh rate through a DVI-D interface


SAMPLE SOFTWARES (SCHEDULE EDITOR & DS PLAYER) ARE INCLUDED  
PLEASE REFER TO SECTION 1 & 2

### 1.1 HOW TO USE SCHEDULE EDITOR

- Click  on desktop to open schedule editor
- Click **Open** to retrieve the content you wish to display
- Click **ADD** to add content to schedule editor
- Repeat this step to loop one content with another
- Click **Save** to save schedule in the same directory as the content is in
- Make as many schedules as you would like
- Make copies of the content if you wish to use the same content to make multiple schedules
- \* Do NOT use the same content file more than once!
- One or more pieces of content should only be used for one schedule



## 2.1 HOW TO PLAY A SCHEDULE

- Click  on desktop to open DynaScan Player
- Double click on the player (black frame) to open dialogue box
- Under "Schedule":

- One** - DynaScan in one full wrap, single screen
- Two** - DynaScan in two screens with two different schedules
- Three** - DynaScan in three screens with three different schedules

- If you click on "One", open the schedule file made
- If you click on "TWO"/"THREE", click **Next >** to display Wizard
- Choose between splitting the screen vertically or horizontally
- Click **Next >** to add the schedule files into the frames
- Once you have the schedules loaded, click **Next >**
- Click **Finish**
- The schedules are up and running
- \* Using the MULTI SCREEN option could cause video lagging

## 2.2 HOW TO PLAY A SINGLE FILE

- Double click on the player (black frame) to open dialogue box
- Under "Single File", click **Open**
- Load a MPG1, MPG2 or an AVI file
- Click **Open** and the file will start to play



## 2.3 HOW TO FORMAT CONTENT FOR THE DS PLAYER

DS0613

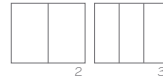


one-screen = 744w x 592h pixels  
 two-screen = 372w x 592h pixels  
 three-screen = 248w x 592h pixels

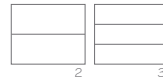


one-screen = 744w x 592h pixels  
 two-screen = 744w x 296h pixels  
 three-screen  $\cong$  744w x 197h pixels

DS0616



one-screen = 960w x 720h pixels  
 two-screen = 480w x 720h pixels  
 three-screen = 320w x 720h pixels



one-screen = 960w x 720h pixels  
 two-screen = 960w x 360h pixels  
 three-screen = 960w x 240h pixels

- DynaScan Player supports: AVI, MPG1, MPG2 and Flash

\* May need to install some codec in order to support all formats

## 2.4 HOW TO MAKE DYNASCAN SCREEN SPIN

- Double click on the player (black frame) to open dialogue box

- Under "Setting", click **Window** to display Window Setting

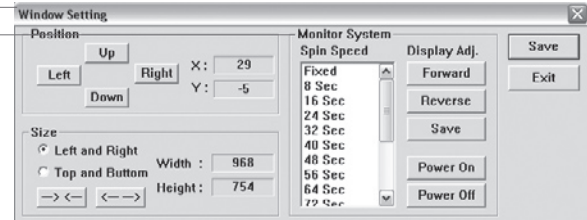
- Adjust the spin speed under "Monitor System"

FIXED = screen does NOT spin

8 Sec = fastest spin speed

120 Sec = slowest spin speed

- Save and Exit





E. [info@dynascanusa.com](mailto:info@dynascanusa.com) | DynaScan Technology, Inc.  
[www.dynascanusa.com](http://www.dynascanusa.com) | 7 Chrysler, Irvine, CA 92618, USA  
T. 949.421.0348 / F. 949.421.0353